



## SWEATSHIRT

- UNISEX sizes
- 1/2 design, long sleeves
- Static dissipative fabric made of a mixture of 43% Polyester, 50% Cotton and 7% Carbon coated yarn
- With conductive cuffs
- Lightweight, breathable and comfortable fit
- Machine washable up to 40 °C
- Weight 270 g/m<sup>2</sup>
- ESD symbol on one sleeve

IEC  
EN

Part no.	Colour
<b>2671.SS.B.*</b>	Blue
*S, M, L, XL, 2XL, 3XL	

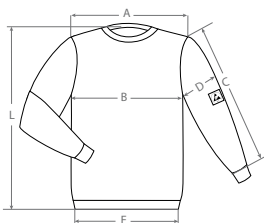


## VEST REFLECTIVE ESD VERSION

- One size XL
- Static dissipative vest for use in ESD protected areas
- Lightweight, breathable and comfortable fit
- Closable with a velcro fastener
- Two „all around“ reflector strips
- Material: 98 % polyester and 2 % carbon coated yarn
- Weight: 120 g/m<sup>2</sup>
- EPA-sign at the left breast side

IEC  
EN

Part no.	Colour
<b>2682.SW</b>	Signal yellow
one size fits all - XL	



Größe / Size	A [cm]	B [cm]	C [cm]	D [cm]	E [cm]	L [cm]
XS	48	52	56	24	40	69
S	48	54	59	25	42	70
M	49	56	59	26	44	71
L	50	58	60	26	46	72
XL	51	60	60	27	48	73
2XL	52	62	61	27	50	74
3XL	53	64	61	28	52	75