



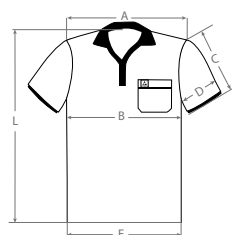
POLOSHIRTS

- UNISEX sizes
- 1/2 design, short sleeves
- Static dissipative fabric with conductive fibres
(**Blue/black:** 47% Polyester, 50% Cotton, 3% Carbon coated yarn)
(**White:** 48% Polyester, 50% Cotton, 2% Carbon coated yarn)
(**Grey:** 8% Polyester, 89% Cotton, 3% Carbon coated yarn)
- Lightweight, breathable and comfortable fit
- Machine washable up to 40°C
- Weight: **Blue/Black/Grey:** 210 g/m²
White: 200 g/m²
- Breast pocket with ESD symbol

IEC
EN

| Part no. | Colour |
|-----------------|--------|
| 2623.P.* | White |
| 2625.P.* | Grey |
| 2627.P.* | Blue |
| 2629.P.* | Black |

*XS, S, M, L, XL, 2XL, 3XL, 4XL, 5XL



| Größe / Size | A [cm] | B [cm] | C [cm] | D [cm] | E [cm] | L [cm] |
|--------------|--------|--------|--------|--------|--------|--------|
| XS | 40 | 50 | 22 | 20 | 45 | 75 |
| S | 43 | 53 | 23 | 21 | 48 | 75 |
| M | 46 | 55 | 24 | 21 | 51 | 76 |
| L | 48 | 59 | 25 | 22 | 55 | 76 |
| XL | 50 | 63 | 26 | 23 | 59 | 78 |
| 2XL | 52 | 67 | 26 | 24 | 63 | 78 |
| 3XL | 54 | 71 | 27 | 26 | 67 | 81 |
| 4XL | 56 | 75 | 28 | 28 | 71 | 82 |
| 5XL | 58 | 79 | 29 | 30 | 75 | 83 |