



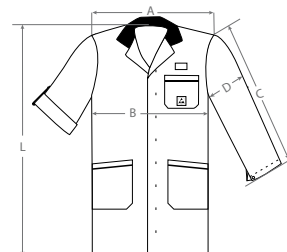
SMOCK AM-160 WITH APPLICATIONS

- With Applications
- UNISEX sizes
- 3/4 design, long sleeves
- Static dissipative fabric made of a mixture of 65% Polyester, 32% Cotton and 3% Carbon coated yarn
- Lightweight, breathable and comfortable fit
- Easy snap fastening
- Machine washable up to 60 °C
- Weight 156 g/m²
- Conductive in 4 mm grid
- Breast pocket with ESD symbol
- Two Side pockets
- Folded sleeves fixture with a snap

IEC
EN

Part no.	Colour
2618.AM160.B*	Blue/Dark blue
2618.AM160.W*	White/Blue
2618.AM160.W.BX*	White/Bordeaux
2618.AM160.G.*	Grey/Black
2618.AM160.G.BX*	Grey/Bordeaux

*XS, S, M, L, XL, 2XL, 3XL, 4XL, 5XL



Größe / Size	A [cm]	B [cm]	C [cm]	D [cm]	L [cm]
XS	44	52	60	21	99
S	46	55	61	22	100
M	48	57	62	23	100
L	50	60	63	24	101
XL	52	63	64	25	102
2XL	55	68	65	27	103
3XL	58	72	66	28	103
4XL	61	76	67	30	104
5XL	64	80	67	31	105