



**!** Suitable only for tables  
Part Nr. 1950.LU.XXX

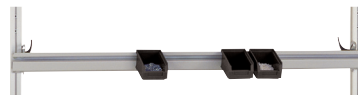
**Cabinets (A-D)**

- Solid metal construction with conductive grey paint
- Dimensions: 500 x 580 x 360 mm / 500 x 580 x 560 mm (W x D x H)
- Easy opening drawers
- With central lock
- Fixed



Part Nr.	Height	Drawer height	Drawers
A 1950.LZ.4562	300 mm	1 x 100 / 1 x 200 mm	2
B 1950.LZ.4662	300 mm	1 x 50 / 1 x 100 / 1 x 150 mm	3
C 1950.LZ.4762	500 mm	1 x 50 / 1 x 100 / 1 x 150 / 1 x 200 mm	4
D 1950.LZ.4812	500 mm	3 x 100 / 1 x 200 mm	4

# ACCESSORIES FOR MELAMINE RESIN COATED WORKBENCHES



application examples



Overview	page
Additional sliding rail	28
Galvanized sliding hanger	28
Continuously adjustable shelf	28
Moveable storage rack	29
Storage rack	29
Storage rack holder	29
Storage bin holder	29
Metallic cable conduit	30

Overview	page
Integrated task light	30
Cabinets	31
Partitions for drawers	31
PC mount	31
Tool Holder Plate	32
Monitor- /Keyboard Support	32
Shelves	33

