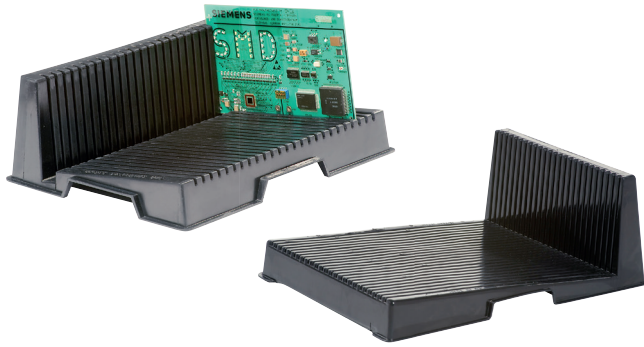


CONDUCTIVE PCB RACK



- Permanent black conductive Polypropylene
- Capacity: 25 boards
- Distance between two slots: app 9,5 mm

Part Nr.	Outer Dimensions (L x W x H)
5366.210.S	210 x 275 x 95 mm, 3 mm slot
5366.350.L	350 x 270 x 130 mm, 2,4 mm slot

FOAM PCB HOLDER



- Made of dissipative PE hard foam
- Permanent, static dissipative, carbon loaded foam
- Cross linked, closed cell
- Abrasion resistant, non-corrosive
- 25 slots / width of slots: 3 mm / length of slots: 12 mm
- Two cut edges

Part Nr.	Dimensions
4550.25.0255.LP	355 x 255 x 25 mm

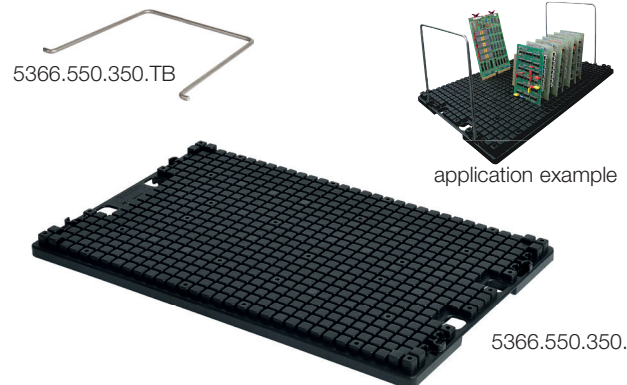
DISSIPATIVE PCB HOLDER



- Permanent, carbon loaded, dissipative Polypropylene
- For storage of printed circuit boards
- Capacity: Long side up to 19 PCB's, short side up to 13 PCB's
- Naps Ø 15 mm
- Distance between naps 1,8 mm

Part Nr.	Dimensions
5366.350.250.G	357 x 257 x 14 mm

DISSIPATIVE PCB HOLDER



- Permanent, carbon loaded, dissipative Polypropylene
- For storage of printed circuit boards
- Capacity: Long side up to 29 PCB's, short side up to 19 PCB's
- Naps 14 mm, quadratic
- Distance between naps 3 mm

Part Nr.	Dimensions
5366.550.350.L	557 x 357 x 22mm
5366.550.350.TB	Carrying handle