

## SMD SPOOL RACKS



5200.03.H.S

Fifo-Principle  
(first in, first out)

- Permanent, conductive carbon loaded Polystyrene
- For storage of SMD reels



5200.03.H.L

Part Nr.	Inner dimensions (L x W x H)
5200.03.H.S	182 x 169 x 190 mm max. Ø 180 mm
5200.03.H.L	335 x 315 x 190 mm max. Ø 330 mm

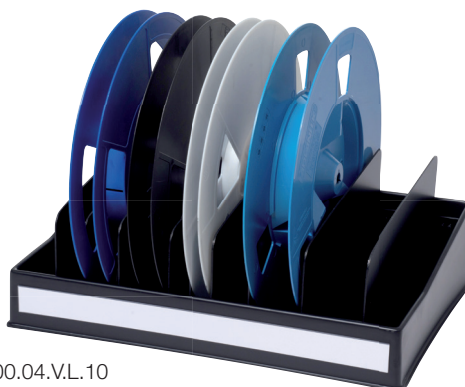
## SMD SPOOL RACKS



5200.04.V.S.10

- Permanent, conductive carbon loaded Polystyrene
- For storage of SMD reels

Supplied with 10 separators and a label



5200.04.V.L.10

Part Nr.	Outer dimensions (L x W x H)
<b>Spool diameter: max. Ø 250 mm</b>	
5200.04.V.S.10	450 x 240 mm
5200.04.ST.S	Single separator
<b>Spool diameter: max. Ø 330 mm</b>	
5200.04.V.L.10	455 x 315 mm
5200.04.ST.L	Single separator