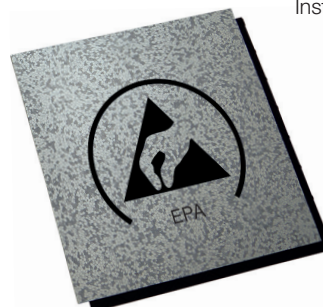
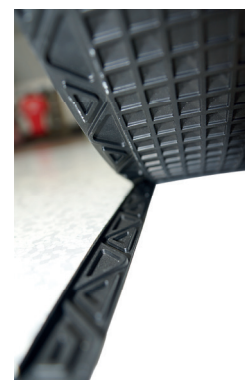


Instructions for use



Tip: Laying with soft-head hammer

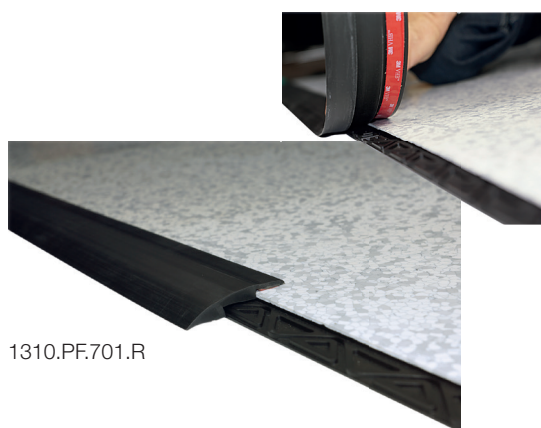
conductive  
backing



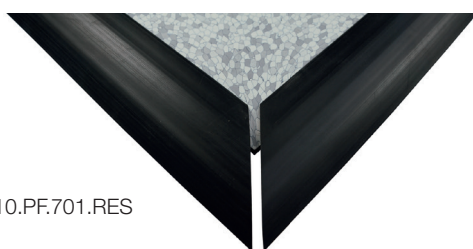
Interlocking system

Flooring material for „do it yourself“ floor laying

- Two layer material
- Volume conductive
- Abrasion resistant
- Conductive, elastic backing
- Backing with waffle structure for installation on problematic substrates (e.g. residual moisture)
- Suitable for chair castors
- Suitable for forklift traffic
- Reusable
- Self-laying (without glue)
- Easy handling using tools for woodwork
- Colour: grey



1310.PF.701.R



1310.PF.701.RES

Part Nr.	Standard Size	Quantity
<b>Puzzle tile</b>		
<b>1310.PF.701</b>	469 x 469 x 8,5 mm	12 pieces (2,64 sqm)
<b>1310.PF.ESD</b>	469 x 469 x 8,5 mm with ESD symbol	1 piece
<b>Transition (optional) – self-adhesive</b>		
<b>1310.PF.701.R</b>	1220 x 65 mm	1 piece
<b>Corner (optional) – self-adhesive</b>		
<b>1310.PF.701.RES</b>	711 x 65 mm	2 pieces

